

# SPEAK UP

... AND LOOK AFTER  
YOUR MATES.

[www.CRASHBASH.CO.NZ](http://www.CRASHBASH.CO.NZ)





# seat belts

What could go wrong?

What can you do to keep you and your passengers safe?

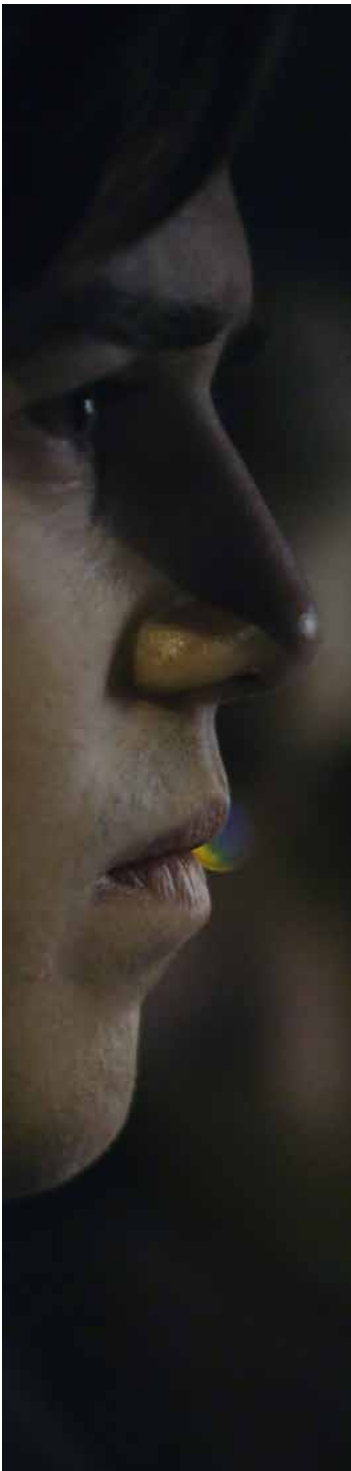


## BREAKOUT #1



# seat belts

QUESTION	ANSWER	What could go wrong?	How can we prevent it?
Why do we wear seat belts?	<b>To protect you and your passengers from serious injuries. Also, to avoid the \$150 fine.</b>	<i>Going through the windscreen or being flung around the car like a rag doll with such force that injures others.</i>	<i>Wear your seat belt; drive defensively.</i>
How less likely are you to die when not wearing a seat belt?	<b>UN says that you are about 60% less likely to be killed when you are wearing your seatbelt.</b>	<i>Any unrestrained object in a vehicle that suddenly stops continues to travel at the speed the vehicle was travelling until they are stopped by something – either inside or outside the vehicle</i>	<i>Ensure all objects, including people, inside vehicles are properly restrained.</i>
What is the fine for not wearing a seat belt?	<b>\$150</b>	<i>You can receive a fine for your offence, and any other unrestrained person in the vehicle under 15 years of age.</i>	<i>Wear your seatbelt and make sure your family and friends are wearing theirs.</i>
How much is the fine for being a passenger not wearing a seat belt?	<b>\$150 – unless they are under 15, then the driver gets the fine.</b>		
At what age can a passenger be fined for not wearing a seat belt?	<b>15 years and above.</b>		
In the video clip, who did speak up about the seat belt?			





What can you do to keep you and your passengers safe?

What could go wrong?

**alcohol or drug  
impaired driving**





## BREAKOUT #2

# impaired driving

QUESTION	ANSWER	What could go wrong?	How can we prevent it?
How much alcohol can you drink aged under 20?	<b>Zero</b>	<i>Caught drink driving on your restricted licence can mean disqualification and loss of licence.</i>	<ul style="list-style-type: none"><li>• Don't drink alcohol if you are driving</li><li>• Have a sober driver if you are going to drink alcohol</li><li>• Take a taxi</li><li>• Stay overnight</li></ul>
What effects on your body does alcohol have if you drive?	<b>Alcohol slows your reaction time and impairs your judgement around decision making – this includes basic driving decisions.</b>	<ul style="list-style-type: none"><li>• <i>Poor judgement and decision making</i></li><li>• <i>Over-estimate your own competency as a driver</i></li></ul>	



What can you do to keep you and your passengers safe?

What could go wrong?

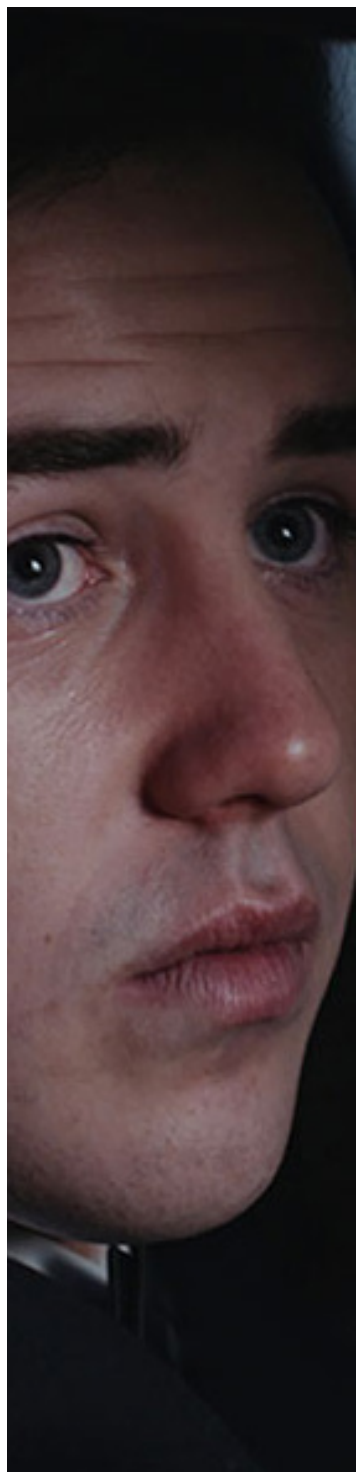
**passengers**

BREAKOUT #2, continued



# passengers

QUESTION	ANSWER	What could go wrong?	How can we prevent it?
Who can you carry in the car if you are driving on your restricted licence?	<ul style="list-style-type: none"> <li>• <b>A supervisor who has held their full licence for 2 years</b></li> <li>• <b>Your parent or guardian</b></li> <li>• <b>Your spouse or partner</b></li> <li>• <b>A child or a relative who lives with you and is under your care</b></li> <li>• <b>A driver who has had their full drivers licence for 2 years.</b></li> </ul>	<p><i>You can lose your licence carrying your mates with you in the car.</i></p>	
What are the risk of carrying passengers?	<p><b>Distraction!</b></p> <p><b>The fatal crash risk for young drivers is higher if they have passengers in the car. With 2 or more passengers, the risk is 10 times greater compared to driving alone. And the risk is at its greatest when the passengers are a similar age to the driver.</b></p>	<p><i>When passengers get bored they may look at ways to start entertaining themselves such as:</i></p> <ul style="list-style-type: none"> <li>• <i>Talking and expecting the driver to engage and look at them or their phone to share some gossip!</i></li> <li>• <i>Starting emotional or interesting conversations</i></li> <li>• <i>Talking loudly/yelling /screaming at each other or someone outside the car</i></li> <li>• <i>Turning up the music volume</i></li> <li>• <i>Applying peer pressure to take risks</i></li> <li>• <i>'Joking around'</i></li> <li>• <i>Singing</i></li> <li>• <i>Mess with driver controls such as mirrors or lights</i></li> </ul>	<p><i>Be a passenger, not a distraction.</i></p>





What can you do to keep you and your passengers safe?

What could go wrong?

**graduated  
licence breach**



BREAKOUT #2, continued



# graduated licence breach

QUESTION	ANSWER	What could go wrong?	How can we prevent it?
How many licence breaches can you have within 2 years before you lose your learners or restricted licence?	<b>The penalty for breaching the conditions of your GDLS is \$100 and 35 demerit points. You can only accrue 100 demerit points in any 24 month period. So they can get caught three times before they lose their licence.</b>	<i>You could lose your licence for three months. Further offending will then see your car impounded and you being charged with an offence and sent to Court.</i>	<i>Comply with the term and conditions of your graduated licence.</i>
How long do you lose it for?	<b>3 months.</b>		
Who did speak up in the script?			



**speed**

What can you do to keep you and your passengers safe?

What could go wrong?

What can you do to keep you and your passengers safe?

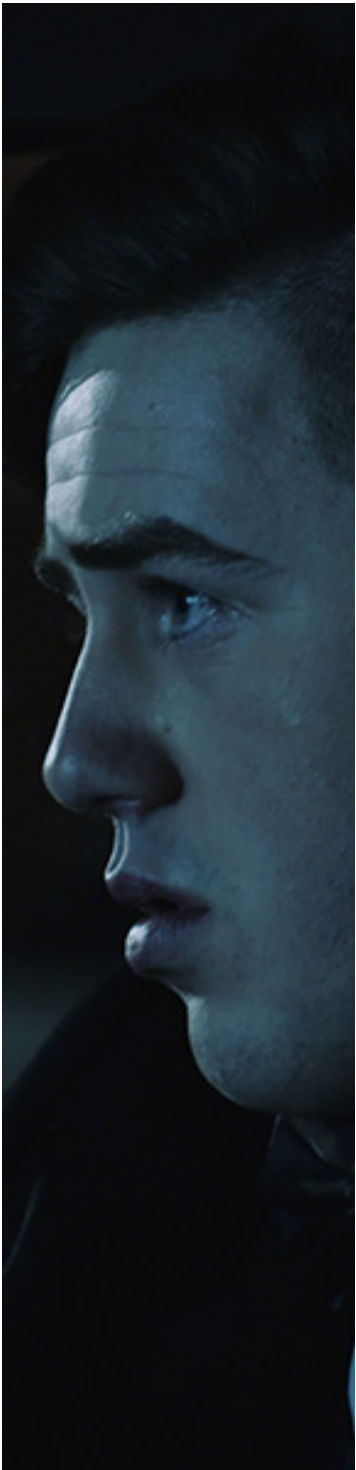


**BREAKOUT #3**



# speeding

QUESTION	ANSWER	What could go wrong?	How can we prevent it?																				
How many crashes in Christchurch are caused by young drivers speeding?	<b>17-24 year old drivers (especially males) are over-represented in all fatal five offences - including speed. They make up 14% of the local population and are responsible in approximately 35% of crashes.</b>	<ul style="list-style-type: none"> <li>• Too fast for condition - wet or icy roads or bends in the road</li> <li>• Unable to stop in time</li> <li>• Loss of control/skidding</li> <li>• Other road users</li> </ul>	<p>Drivers aren't aware that they can be travelling at the speed limit and still be driving unsafely. The speed limit is the maximum legal speed that you can travel at on a road in good conditions.</p> <p>You should always be aware of changes in traffic, road and weather conditions and reduce your speed accordingly.</p>																				
For every 10 km/h of speed, how much longer does it take you to stop?	<p><b>30 km = 13 metres</b>  <b>40 km = 20 metres</b>  <b>50 km = 27 metres</b>  <b>60 km = 37 metres</b>  <b>70 km = 47 metres</b>  <b>80 km = 57 metres</b></p>	<i>You may be unable to react to the actions of a driver in front of you and end up crashing into the rear of them.</i>	<i>Ensure you follow vehicles at a safe distance.</i>																				
Speeding Fines?	<p><b>Speed fines per kilometre over:</b></p> <table border="0"> <tr> <td>1-10</td> <td>\$30</td> <td>31-35</td> <td>\$300</td> </tr> <tr> <td>11-15</td> <td>\$80</td> <td>36-40</td> <td>\$400</td> </tr> <tr> <td>16-20</td> <td>\$120</td> <td>41-45</td> <td>\$510</td> </tr> <tr> <td>21-25</td> <td>\$170</td> <td>46-50</td> <td>\$630</td> </tr> <tr> <td>26-30</td> <td>\$230</td> <td></td> <td></td> </tr> </table> <p><b>More than 40 km/hr get issued with a 28 day suspension!</b></p> <p><b>More than 50 km/hr you could be charged with careless, dangerous or reckless driving!</b></p>	1-10	\$30	31-35	\$300	11-15	\$80	36-40	\$400	16-20	\$120	41-45	\$510	21-25	\$170	46-50	\$630	26-30	\$230				
1-10	\$30	31-35	\$300																				
11-15	\$80	36-40	\$400																				
16-20	\$120	41-45	\$510																				
21-25	\$170	46-50	\$630																				
26-30	\$230																						
Following too close?	<b>\$150 fine</b>																						





What can you do to keep you and your passengers safe?

What could go wrong?

**cell phones**



BREAKOUT #3, continued



# cell phones

QUESTION	ANSWER	What could go wrong?	How can we prevent it?
How did Rebecca distract Nick?			
What is the fine for using a cell phone while you are driving?	<p><b>\$80 and 20 demerit points. You can only accrue 100 demerit points in any 24 month period before you lose your licence.</b></p> <p><b>Canterbury issues about 20% of notices for cell-phone infringement nationally.</b></p>	<p><i>It impairs your driving performance in a number of ways e.g. slower reaction time especially when braking, impaired ability to stay in the correct lane and shorter following distances.</i></p> <p><i>Using a mobile phone while driving is causing drivers to take their eyes off the road, their hands off the steering wheel and their minds off the road.</i></p>	<p><i>Switch mobile phones OFF when driving. It is illegal to send or receive text messages or calls on hand-held mobile phones while driving.</i></p> <p><i>Let incoming calls go to voicemail or pull off the road to answer.</i></p>
How long does it take to stop?	<p><b>Drivers engaged in txt messaging on a mobile phone are 23 times more likely to be involved in a crash than drivers focussed on the road!</b></p> <p><b>Sending a text takes your eyes of the road for 4.6 seconds. At 90km's/ hour that's like driving the length of a rugby field!</b></p>		

